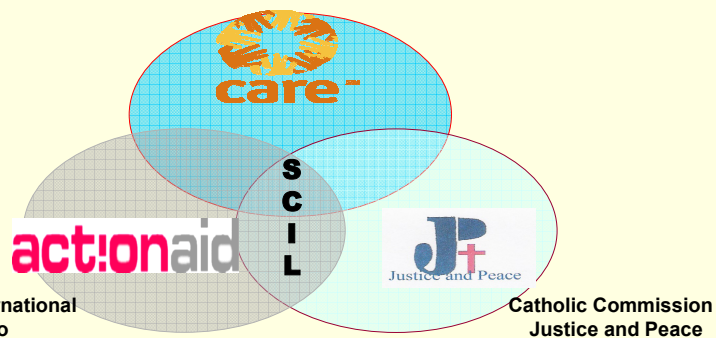


# SCIL

## Strengthening Civil Society In Lesotho

SCIL is a programme developed and implemented by:-

Care Lesotho - South Africa



## SCIL's GOAL

---

SCIL's primary goal is to empower civil society organizations and networks to effectively contribute to strengthening democratic processes and poverty reduction in Lesotho.

## SCIL's Objectives

---

- To increase the effectiveness and sustainability of the Civil Society Organisations (CSOs), networks and community councils' work
- To strengthen engagement with the Government of Lesotho directly through active participation in networks and coalitions. This includes developing good practice models of decentralised planning, service delivery, budgeting and accountability at community levels that can be offered as policy options for government and CSOs' stakeholders.

## Objectives (con't)

---

- To promote and sustain CSOs through effective grants management for community advocacy, capacity building and strengthening the development initiatives.

## WHY WE EXIST? – TO BRIDGE THE IDENTIFIED GAPS!

---

- Previous initiatives were limited in scope (thematic focus, geographical spread, limited time).
- Limited co-ordination between initiatives (CSO's and Support Partners).
- Limited involvement/participation of CSOs in the design of capacity building programmes.
- Limited access to resources (funding) by CSOs {lack of ability to retain competent people}.
- Sustaining the Spirit of Voluntarism

## WHY WE EXIST?

- Link between capacity building initiatives and broader community development concerns (relevancy of interventions).
- Community driven capacity building Agendas; linking community Agendas to national Policy processes.
- Implementation done from Maseru (no local support and follow-up).

Monday, 24 July 2006

Strengthening Civil Society in Lesotho

7

## What Will SCIL Do Differently?

- **Build on previous CSOs' experiences and ongoing initiatives**
- **Country wide implementation**
- **Work with partners' presence where SCIL operates**
- **Link capacity building to potential sources of funding**
- **Strengthen the Coordination and collaboration between CSOs**
- **Strong involvement of CSOs in designing their capacity building**
- **Anchoring the CSOs' capacity building to decentralization process (district and CCs).**
- **Collaboration amongst INGOs/NGO to support CSO capacity building**

Monday, 24 July 2006

Strengthening Civil Society in Lesotho

8

## Methodology/Approaches

SCIL offers the following support programmes:-

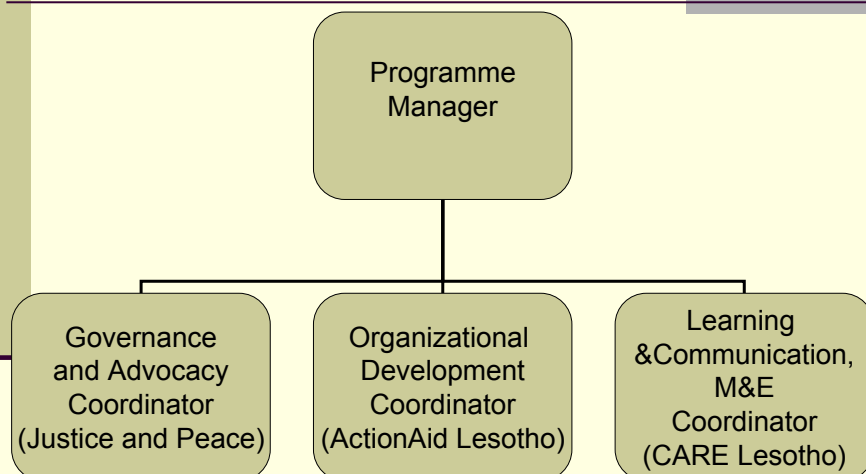
- **Training workshops**
- **Mentoring**
- **Consultation forums**
- **Cross visits and exchange programmes**
- **Attachments/Intenship programmes**
- **IT approaches to development**
- **Technical assistance (i.e. Small grants for CSOs)**
- **Consultancies**

Monday, 24 July 2006

Strengthening Civil Society in Lesotho

9

## Programme Implementation Team



Monday, 24 July 2006

Strengthening Civil Society in Lesotho

10

## .SCIL'S CHALLENGES

To remain focused and ensure citizens' participation with National Policies:

- National Vision 2020
- Poverty Reduction Strategies
- Millennium Development Goals
- Smart Partnership Programmes
- African Peer Review Mechanisms
- National Budgeting Cycle
- Gender mainstreaming
- HIV/AIDS

Monday, 24 July 2006

Strengthening Civil Society in Lesotho

11

## Contacts

- M&E Communication & Learning Coordinator
- CARE Lesotho-South Africa
- PO Box 682
- Maseru 100
- Lesotho.
- Tel: +266-22314398
- Fax +266-22310195.
- Cell: 63164858
- E-mail: [mtseuoa@care.org.ls](mailto:mtseuoa@care.org.ls)
  
- Governance Coordinator
- Catholic Commission Justice & Peace
- PO Box 200
- Maseru 100
- Tel: +266-22324263/22312750
- Fax: +266-223312751
- Cell: 58052355
- E-mail: [tmatsasa@ccjp.org.ls](mailto:tmatsasa@ccjp.org.ls)
  
- Organizational Development Coordinator
- ActionAid International Lesotho
- PO Box 297
- Maseru 100
- Tel: +266-22311613
- Fax: +266-22311681
- Cell: 58032189
- E-mail: [Abraham.Opito@actionaid.org](mailto:Abraham.Opito@actionaid.org)

Monday, 24 July 2006

Strengthening Civil Society in Lesotho

12

## WHAT IS A CIVIL SOCIETY?

*"The range of institutions and organizations that connect people to government and the private sector. This includes faith-based, community-based and non-governmental organizations. Civil society when strong, autonomous of but engaged with government, and truly representative of the people, has the potential to play an instrumental role in improving governance".*

# *SCIL*

# **THANK YOU !!**